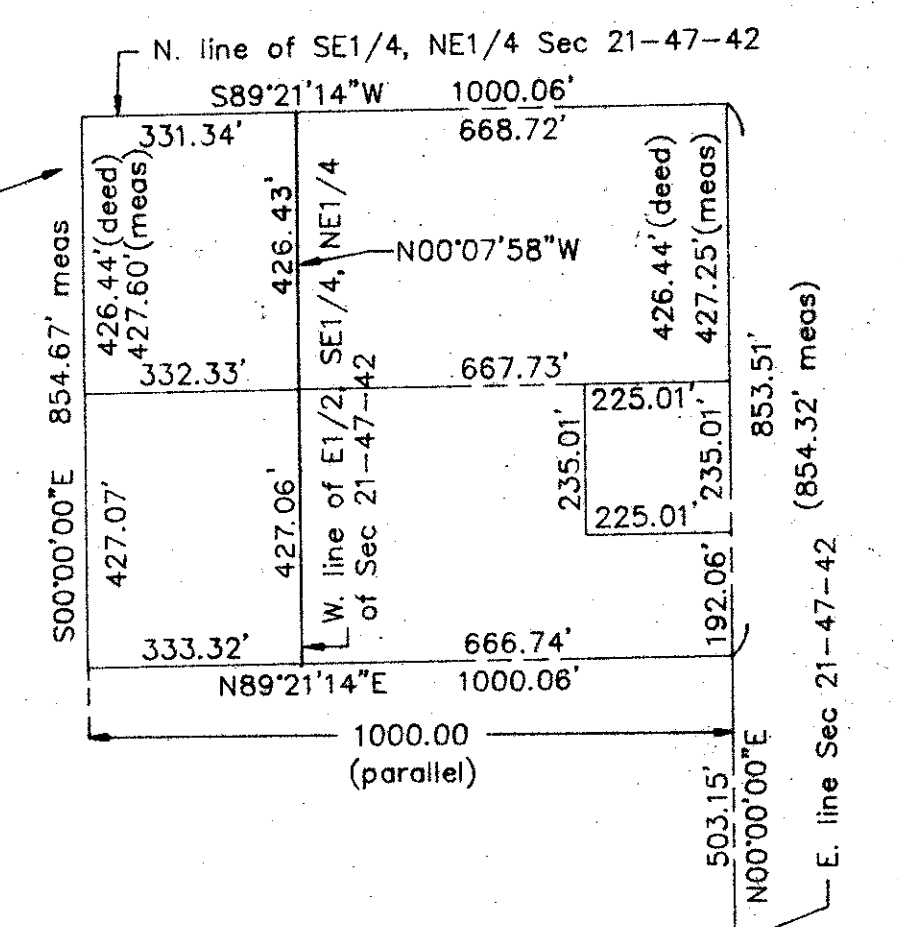
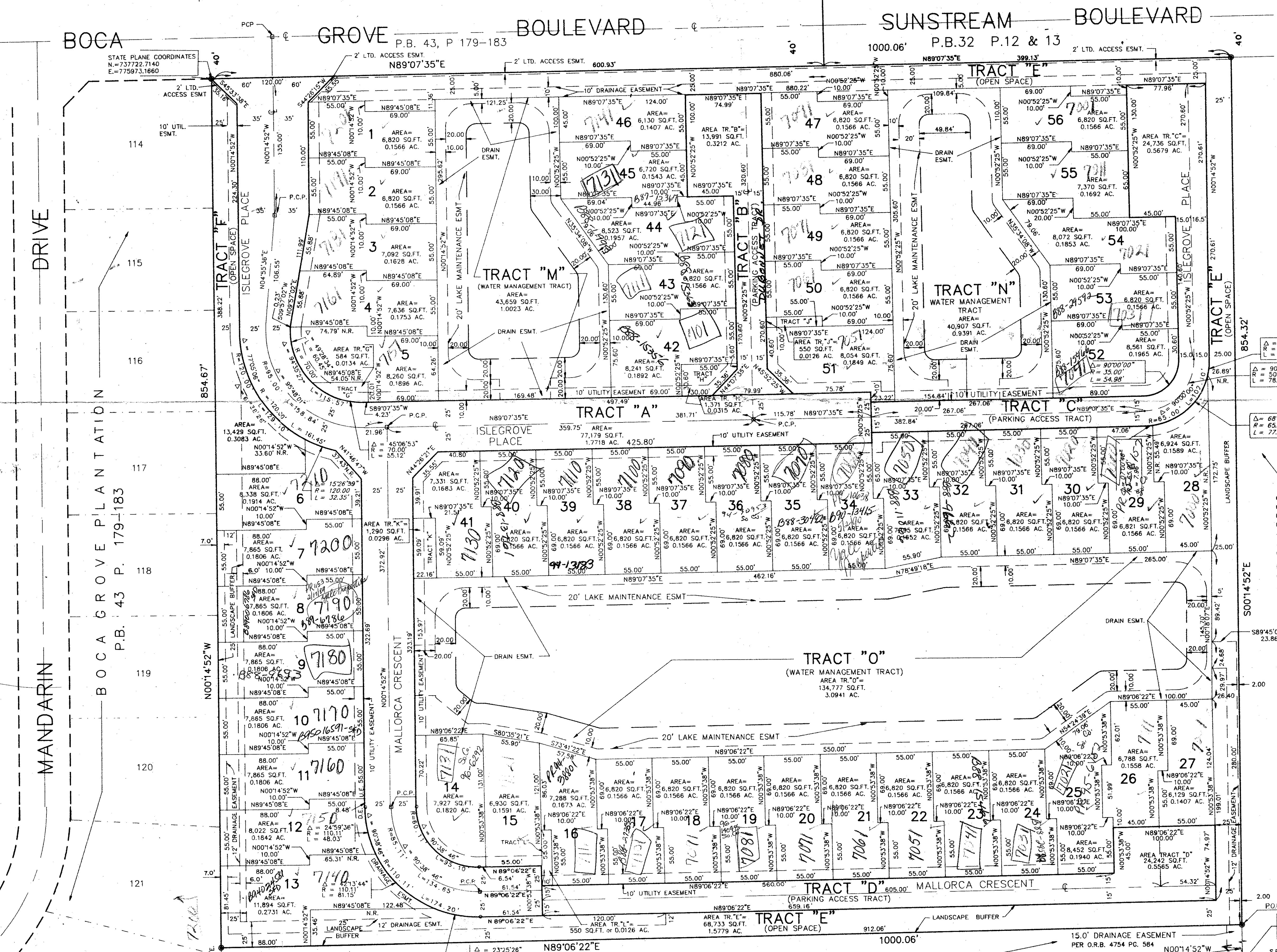
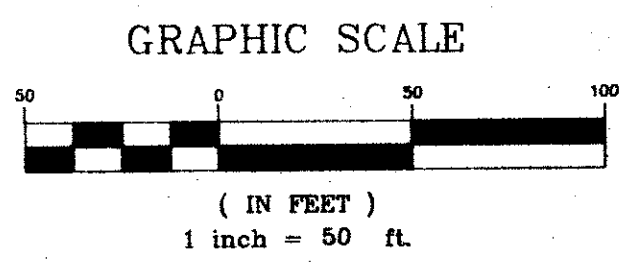


ISLAND IN THE GROVE
AN ADDITION TO BOCA GROVE PLANTATION P.U.D.
SECTION 21, TOWNSHIP 47 SOUTH, RANGE 42 EAST
PALM BEACH COUNTY, FLORIDA.
NOVEMBER, 1987



COMPOSITE MAP OF LEGAL DESCRIPTION
(1 IN. = 300 FT.)
(Bearings in Map Based on Deeds)

NOTE:
1. WATER MANAGEMENT TRACTS "M", "N" AND "O" ARE THE PERPETUAL MAINTENANCE OBLIGATION OF THE ISLAND IN THE GROVE HOMEOWNERS ASSOCIATION INC., ITS SUCCESSORS AND ASSIGNS.

Ret. 80-214A
60/179
0209-002

FORTIN, LEAVY, SKILES.
299 West Camino Gardens Blvd.
Boca Raton, Florida 33432

ISLAND IN THE GROVE